



EMBRACING THE ELEMENTS SINCE 1975



AGRICULTURE / MARINE / SAFETY / KAIWAKACLOTHING.CO.NZ

CONTENTS

AGRICULTURAL	4	STORMFORCE
	6	STORMFORCE Lady of the Land
	8	AGTEX
	10	SEALTEX
	12	SEALTEX Lady of the Land
	14	DAIRYTEX
	16	OVERALLS
	18	KAIWAKA KIDS
	20	THERMALS & FLEECE
	22	ACCESSORIES
	24	WEATHERSHIELD & CAMO
	26	OILSKIN
MARINE	28	STORMFORCE BLUE
	30	AQUAFORCE
	32	TUFFLON
	34	AQUASEAL
SAFETY	36	STORMFORCE HI-VIZ
	38	TUFFLEX FLAME RETARDANT
	40	TUFFLEX HI-VIZ
	42	WINDTEC BASIC PVC
	44	FOOD GRADE & APRONS
	46	SIZE CHART
	47	MATERIAL GLOSSARY

EMBRACING THE ELEMENTS

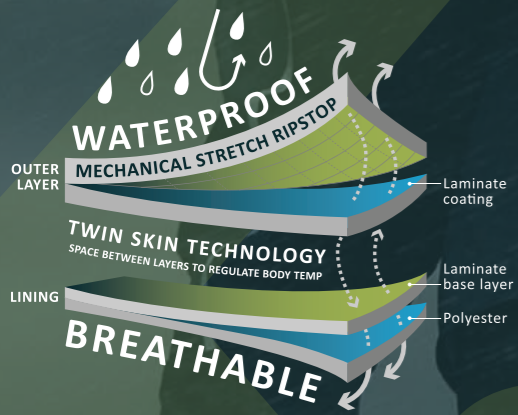
We all know you can't change the weather so here at Kaiwaka Clothing we design garments so you can embrace it. The elements can surprise you anywhere in the world, throwing everything and anything in your direction. Remaining productive in all weather is vital to your health and your business. Kaiwaka Clothing is designed and constructed just for that. It is produced from the highest quality materials and completed with a 100% quality check before it reaches the shelf ready for you and your world.

FLASHBACK

With six generations of farming experience taking them from Scotland to Nova Scotia and finally New Zealand the Stewart family embraced everything the elements threw at them. In 1975 with their heritage and farming experience behind them Kaiwaka Clothing began creating no-nonsense garments to assist everyone in the outdoors to be more productive whether it is on the farm, the boat or in the forest. The family continue to produce reliable and sought-after products enabling you to get outside no matter what the elements throw at you.

STORMFORCE

PREMIUM



STORMFORCE

BRING IT ON!

Stormforce never fails to keep you dry and warm when you're working in cold and wet conditions, even if it's raining horizontally and blowing 50+ knots. Our unique **TWIN-SKIN TECHNOLOGY** features an outer layer of 100% waterproof ripstop fabric with sealed seams and an inner liner of breathable waterproof material with welded seams, so you get double protection from the elements. Handy innovations include purpose-designed pockets, two-way zippers and hoods that preserve your peripheral vision.



* Disclaimer - Vests are not made in New Zealand. Product sold outside of NZ & AU are not NZ made.

PARKA

STFC110 SIZE: SM-5XL



Double stormflap with brass metal dome fasteners
Reflector tape for extra visibility and safety
Heavy duty two-way zipper
Neoprene wrist cuffs



Unique stormproof hood design with drawstring adjustments
Internal zipped chest pocket
Two large external waterproof storage pockets
Waterproof, windproof and breathable lining

BIB OVERTROUSERS

STFC111 SIZE: SM-5XL



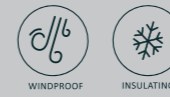
Heavy duty elasticised braces with industrial side release buckles
Two lined hip pockets
Domed at the ankles for secure closure over boot



Large internal chest pocket with Velcro closure
Reinforced crutch for maximum movement and strength
Cut-away heel prevents trouser leg from getting caught under your boot

SHORT SLEEVE VEST

STFC115 SIZE: SM-5XL



Lined with sherpa fleece for added warmth and comfort
Reflector tape for extra visibility and safety
Extra long tail flap for extra protection



High collar that fits under a helmet
8 pockets with stormflap
4 top pockets
4 waist pockets
Cut-away front to reduce bulk

WINTER JACKET

STFC113 SIZE: SM-5XL



Jacket fully lined with micro-fleece
Double stormflap with brass metal dome fasteners
Reflector tape for extra visibility and safety
Heavy duty two-way zipper
Neoprene wrist cuffs



Unique stormproof hood design with drawstring adjustments
Internal zipped chest pocket
4 external pockets; 2 hand pockets; 2 large storage pockets
Cut-away front to reduce bulk
Extended back for extra protection

OVERTROUSERS

STFC112 SIZE: SM-5XL



Elastic and webbed waistband with nonslip step lock fastener
Domed at the ankles for secure closure over boot



Two lined hip pockets
Reinforced crutch for maximum movement and strength
Cut-away heel prevents trouser leg from getting caught under your boot

SLEEVELESS VEST

STFC116 SIZE: SM-5XL



Lined with sherpa fleece for added warmth and comfort
Reflector tape for extra visibility and safety
Extra long tail flap for extra protection

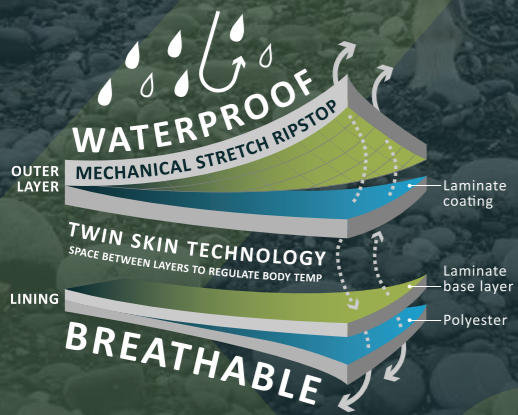


High collar that fits under a helmet
8 pockets with stormflap
4 top pockets
4 waist pockets
Cut-away front to reduce bulk

STORMFORCE

LADY OF THE LAND

PREMIUM



STORMFORCE LADY OF THE LAND

WORK WITH CONFIDENCE

There's no need to settle for bloke's gear to stay warm and dry when you're working outdoors. Our Stormforce Lady of the Land range is cut for the female form, so you'll feel comfortable and look great while you're embracing the elements. **TWIN-SKIN TECHNOLOGY** is the secret; an outer layer of 100% waterproof ripstop fabric with sealed seams and an inner liner of breathable waterproof material with welded seams.



* disclaimer - product sold outside of NZ & AU are not NZ made.

PARKA

STFCL120 SIZE: XS-3XL



- Double stormflap with brass metal dome fasteners
- Reflector tape for extra visibility and safety
- Heavy duty two-way zipper
- Neoprene wrist cuffs



- Unique stormproof hood design with drawstring adjustments
- Internal zipped chest pocket
- Tailored design for a better fit
- Two large external waterproof storage pockets
- Waterproof, windproof and breathable lining

WINTER JACKET

STFCL123 SIZE: XS-3XL



- Jacket fully lined with micro-fleece
- Double stormflap with brass metal dome fasteners
- Reflector tape for extra visibility and safety
- Heavy duty two-way zipper
- Neoprene wrist cuffs



- Unique stormproof hood design with drawstring adjustments
- Internal zipped chest pocket
- Tailored design for a better fit
- 4 external pockets, 2 hand pockets, 2 large storage pockets
- Cut-away front to reduce bulk
- Extended back for extra protection

BIB OVERTROUSERS

STFCL121 SIZE: XS-3XL



- Heavy duty elasticised braces with industrial side release buckles
- Two lined hip pockets
- Domed at the ankles for secure closure over boot



- Large internal chest pocket with Velcro closure
- Tailored design for a better fit
- Reinforced crutch for maximum movement and strength
- Cut-away heel prevents trouser leg from getting caught under your boot

OVERTROUSERS

STFCL122 SIZE: XS-3XL



- Elastic and webbed waistband with nonslip step lock fastener
- Domed at the ankles for secure closure over boot



- Two lined hip pockets
- Reinforced crutch for maximum movement and strength
- Cut-away heel prevents trouser leg from getting caught under your boot





AGTEX

NO ORDINARY PU OR PVC

Our new Agtex range uses a revolutionary new outerwear fabric which is ideal if you're working in agriculture as it combines the flexibility of our Sealtex range with the chemical resistance of our Dairytex range - giving you the best performance of both. Agtex is made with high-quality materials, and combines thoughtful design features with rugged construction to provide you with both comfort and confidence. And of course Agtex is 100% waterproof in the most extreme weather.

**NO SPLIT SEAM
LIFETIME GUARANTEE**



MENS

PARKA

AG110 SIZE: SM-5XL



Double stormflap over zip with brass metal dome fasteners

Heavy duty two-way zipper

Comfortable and waterproof internal wrist cuffs in sleeves



Unique full-face storm-proof collar and hood with drawstring and toggle adjustment

Two large waterproof storage pockets

Two hand warmer pockets

BIB OVERTROUSERS

AG111 SIZE: SM-5XL



Elasticised adjustable braces

Two side entry pockets for access to your trouser pocket

Domed at ankles for secure closure over boots



Large internal waterproof chest pocket

Elasticated back waistband

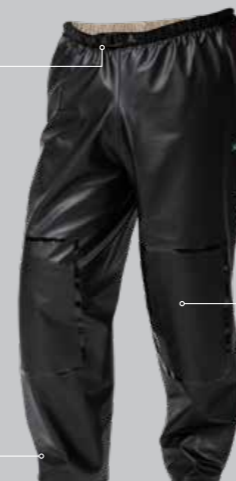
OVERTROUSERS

AG112 SIZE: SM-5XL



Elastic/webbed waistband with non-slip step lock fastener

Domed at ankles for secure closure over boots



Two side entry pockets for access to trouser pocket

Reinforced knee patches

WOMENS

PARKA

AGL120 SIZE: XS-3XL



Double stormflap over zip with brass metal dome fasteners

Heavy duty two-way zipper

Comfortable and waterproof internal wrist cuffs in sleeves



Unique full-face storm-proof collar and hood with drawstring and toggle adjustment

Specially shaped for a better fit

Two large waterproof storage pockets

Two hand warmer pockets

BIB OVERTROUSERS

AGL121 SIZE: XS-3XL



Elasticised adjustable braces

Two side entry pockets for access to your trouser pocket

Domed at ankles for secure closure over boots



Large internal waterproof chest pocket

Specially shaped for a better fit

Elasticated back waistband

OVERTROUSERS

AGL122 SIZE: XS-3XL



Elastic waistband with adjustment for easy fitting

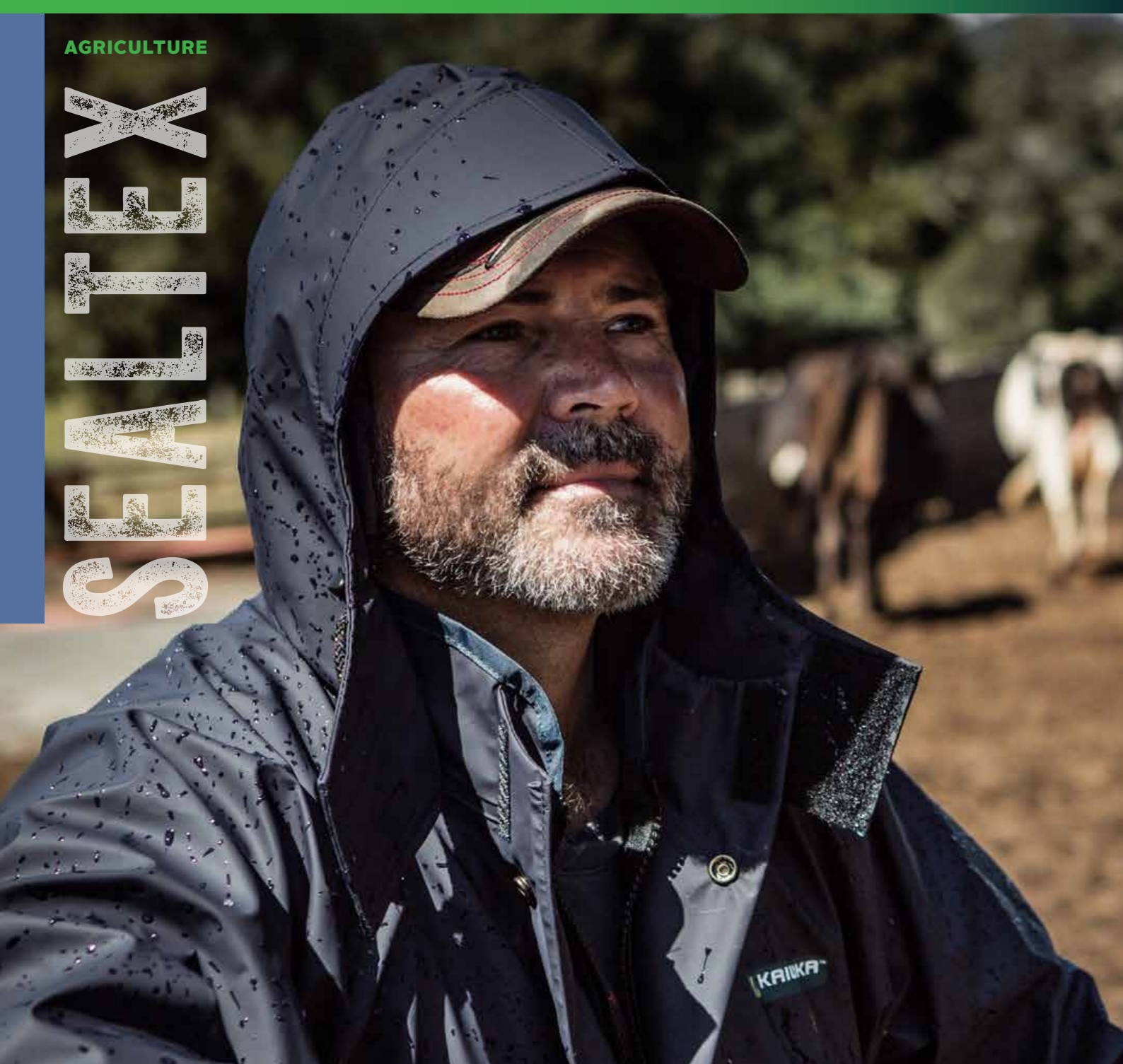
Domed at ankles for secure closure over boots



Two side entry pockets for access to trouser pocket

Specially shaped for a better fit

Reinforced knee patches



SEALTEX

DON'T GET CAUGHT OUT

When you need to stay agile in all weather conditions, our affordable Sealtex wet weather gear moves with you without letting the elements in. The high-quality European fabrics we use for this range are lightweight and resilient, with just the right amount of give. You'll love the level of detail too – purpose-built pockets, robust knee protection and impenetrable stormflaps. Whatever the weather, Sealtex has you covered.

**NO SPLIT SEAM
LIFETIME GUARANTEE**



PARKA

SF110 SIZE: SM-5XL



Double stormflap over zip with brass metal dome fasteners

Heavy duty two-way zipper

Comfortable and waterproof internal wrist cuffs

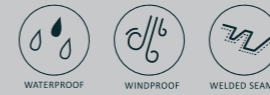


Unique full face stormproof hood with drawstring and toggle adjustment

Two large waterproof storage pockets

OVERTROUSERS

SF112 SIZE: SM-5XL



Elastic and webbed waistband with nonslip step lock fastener

Domed at the ankles for secure closure over boot



Two reinforced side entry pockets for access to trouser pocket

Unique double welded crutch seam with our "No split seam lifetime guarantee"

Reinforced knee patches

BIB OVERTROUSERS

SF111 SIZE: SM-5XL



Heavy duty webbing and elasticised braces with industrial side release buckles

Two reinforced side entry pockets for access to trouser pocket

Domed at the ankles for secure closure over boot



Large internal waterproof chest pocket with overflap

Unique double welded crutch seam with our "No split seam lifetime guarantee"

Reinforced knee patches

SHORT SLEEVE VEST

SF116 SIZE: SM-5XL



Lined with sherpa fleece for added warmth and comfort

Heavy duty zipper

Two hand warmer pockets



Short sleeves to give extra weather protection without restricting movement

One external chest pocket with flap and Velcro closure for cell phones

Front shortened to reduce bulk with long tail flap for extra warmth and weather protection

SLEEVELESS VEST

SF113 SIZE: SM-5XL



Lined with sherpa fleece for added warmth and comfort

Heavy duty zipper

Two hand warmer pockets



One external chest pocket with flap and Velcro closure for cell phones

Front shortened to reduce bulk with long tail flap for extra warmth and weather protection



SEALTEX LADY OF THE LAND



SEALTEX LADY OF THE LAND

STYLISH AND RESILIENT

Being able to move easily and stay dry when you're out in a southerly storm makes the work go faster. That's why our Sealtex Lady of the Land range is made with high-quality European fabrics that are light, flexible, resilient (like you) and 100% waterproof. Special features include purpose-built pockets, robust knee protection, storm-proof collars, two-way zips, internal wrist cuffs and storm flaps.

**NO SPLIT SEAM
LIFETIME GUARANTEE**



PARKA

SFL410 SIZE: XS-3XL



OVERTROUSERS

SFL412 SIZE: XS-3XL



BIB OVERTROUSERS

SFL411 SIZE: XS-3XL



SHORT SLEEVE VEST

SFL414 SIZE: XS-3XL



SLEEVELESS VEST

SFL413 SIZE: XS-3XL





PARKA

DT330 SIZE: SM-5XL



Stormflap over zip with brass metal dome fasteners

Heavy duty two-way zipper

Neoprene wrist cuffs



Unique full faced stormproof hood with drawstring and toggle adjustment, giving excellent peripheral vision

Two large waterproof storage pockets

BIB OVERTROUSERS

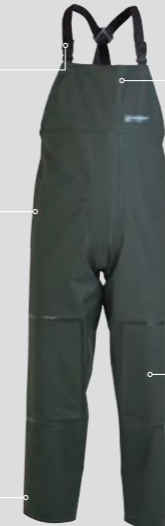
DT331 SIZE: SM-5XL



Heavy duty webbing and elasticised braces with industrial side release buckles

Two reinforced pockets for access to trouser pocket

Domed at the ankles for secure closure over boot



Large internal chest pocket with overflap

Reinforced knee patches

OVERTROUSERS

DT332 SIZE: SM-5XL



Elastic and webbed waistband with nonslip step lock fastener

Domed at the ankles for secure closure over boot



Two reinforced pockets for access to trouser pocket

Reinforced knee patches

DAIRYTEX

WHATEVER THE JOB THROWS AT YOU

It's not just weather you need protection from. When you're up to your ears in the dairy industry, there are fats, oils, acids and cleaning chemicals to cope with. Dairytex puts a comfortable protective layer between you and the work. Made from resilient European fabrics with just the right degree of stretch, every garment is built to last.

**NO SPLIT SEAM
LIFETIME GUARANTEE**



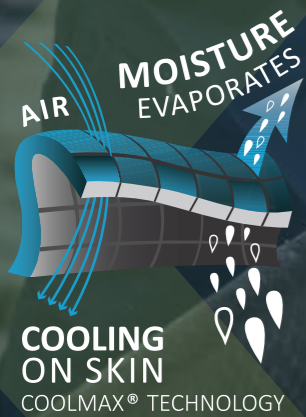
OVERALLS

PREMIUM



OVERALLS

AGRICOV SIZE: 4-12



OVERALLS

COMFORT LIKE NO OTHER

Once upon a time overalls were stretch-less, baggy-butt, ill-fitting things that didn't get you excited about your day. They restricted your movement and were hot, especially on sunny days. Kaiwaka Clothing has changed all that. Our overalls are engineered to perform on every front. This fabric is the ultimate material for superior overalls using Lycra® and Coolmax® technology. You get the natural breathability of cotton, the hard-wearing durability of polyester and the two-way stretch properties of Lycra®. Bend, crouch, run, jump, dig, drive and feed out – these overalls support total freedom of movement, whatever you do.



KAIWAKA KIDS



PARKA

TR1002/G/L SIZE: 2-12



Double stormflap over zip with dome fasteners

Reflective safety strip around chest to keep an eye on kids

Comfortable elasticated wrist cuffs

Full head protection

Two large waterproof storage pockets

VEST

TR1030/G/L SIZE: 2-12



Lined with sherpa fleece for added warmth and comfort

Reflective safety strip around chest to keep an eye on kids

High collar for extra protection

Two hand warmer pockets

BIB OVERTROUSERS

TR1010/G/L SIZE: 2-12



Adjustable elasticised shoulder straps

Two safety strips around right leg

Strap under foot to hold leg down

Full front and high back protection

Elasticated waist to ensure snug fit

Elasticated cuffs around base of legs

OVERTROUSERS

TR1020/G/L SIZE: 2-12



Elasticated waist

Two safety strips around right leg

Strap under foot to hold leg down

Elasticated cuffs around base of legs

KAIWAKA KIDS

COOL KIDS WEAR KAIWAKA

Kit your kids out with Kaiwaka gear and they'll be easy to spot in a crowd. With a colour scheme of black, silver reflector tape and neon green, our Kaiwaka Kids range looks great and performs perfectly in a downpour. The high-quality materials ensure these jackets and pants are ultra-comfortable, waterproof, lightweight and flexible. Now your kids can get on with their fun and outdoor chores in any weather.



THERMALS & FLEECE PACK



THERMALS & FLEECE PACK

COSY UNDERLAYERS

Ideal under any Kaiwaka Clothing jacket, our thermals are built to survive everyday wear and tear, as well as daily machine washing. The fabric's knitted from hollowcore fibre, which helps to regulate body temperature and keep you comfortable. It's breathable too, so there's less chance of feeling hot and sweaty. Flat seams eliminate the scratchy feeling you sometimes get with thermals.

SHORT SLEEVE
TKT3010 SIZE: XS-5XL



LONG SLEEVE
TKT3000 SIZE: XS-5XL



TROUSERS
TKT3020 SIZE: XS-5XL



THERMALS

Ultimate lightweight next to skin warmth and comfort. These THERMALS are made with insulating properties and quick to dry construction to provide you with optimum breathability and warmth without compromising on weight. The 180gsm performance fabric's unique hollow fibre polyester construction creates air pockets that trap air and retain your body heat, keeping you warm all day long. The insulating ability and non-pilling appearance are maintained even after repeated washing, making our THERMALS essential everyday wash-and-wear items.

- **Lightweight polyester:** 180gsm performance fabric
- **Flat seams:** relaxed fit with flat seams to enhance performance, eliminate abrasion without restricting body movement
- **Hollowcore fibre technology** for regulation of body temperature
- **Easy care:** machine washable and super quick drying

6 PIECE FLEECE PACK
TBF1000 SIZE: XS-3XL



- Dry Bum Pants (black)**
285gsm anti-pill fleece, drawcord waist, 2 zip pockets, dry bum lining, elastic cuffs
- Fleece Shirt (olive)**
285gsm anti-pill fleece, 2 chest pockets with flaps, 1/2 zip
- Deluxe Fleece Tee (olive)**
285gsm anti-pill fleece
- Microfleece Singlet (black)**
- Microfleece Beanie (olive)**
- Outdoor Socks (black and olive)**

ACCESSORIES

ACCESSORIES

ALL THE EXTRAS

For your extremities, there are mittens, socks and our famous Kaiwaka beanie. Our accessories range also includes sleeve protectors, gumboots and the ultimate apron, for really messy jobs and when you're standing on the side-line at a kids' sports match.

ULTIMATE APRON

AGTX108 Black Large
AGTX107 Blue Small



Crossover adjustable back straps for comfort and fit

Two handy sizes: small blue and black large

Large pocket in front with drainage hole

Double wear protection

Size can be cut to length

MOTORBIKE MITTENS

ST226



Adjustable domes

European fabric with stretch characteristics

Sherpa fleece lining

BEANIES

BNE007 Grey / BNE008 Green / BNE009 Blue

SIZE: One Size



Cable knit beanie

Internal Microfleece sweatband

KAIWAKA SOCKS

Mens 6-10 / SOCM610
Mens 11-14 / SOCM1114
Ladies 2-8 / SOCL28



Will not slip down in boot

60% wool / 40% nylon

Durable and odourless

Warm and comfortable

DAIRYTEX SLEEVE PROTECTOR

AGTX109 SIZE: SM-XL



Elastic back strap for ease and movement

Quick release buckle

Waterproof wrist cuffs

Shaped to fit over your arms and shoulders

SEALTEX MITTENS

SF114 SIZE: Medium and Large



100% waterproof fabric

Lined with sherpa fleece for added warmth and comfort

GUMBOOT

GUMBOOT/GR SIZE: (UK) 5-14



Washable inside and out

Extremely comfortable and light weight

NZ/ AU standards AS/NZS 2210:3.2009 CLASS II

Removable orthotic insole

Suitable for extreme conditions

Motorbike resistant

WEATHERSHIELD



WEATHERSHIELD

TICKS ALL THE BOXES

Our Weathershield range is about versatility. You can wear these hoodies and jackets for work, sport, leisure or adventure. They're made with an advanced triple-layer fleece, which has an external layer of advanced microfleece, a PU windproof mid-layer and a cosy microfleece internal layer. All Weathershield garments are windproof, water-resistant and breathable to ensure maximum comfort.



BUSH SHIRT

WS920 SIZE: SM-5XL



- Fully lined
- Stormflap over zip with brass metal dome fasteners
- Heavy duty two-way zipper
- Neoprene wrist cuffs
- Unique stormproof hood design with drawstring toggle adjustments
- One chest pocket
- Two lined hip pockets

LONG SLEEVE HOODIE

WS932 SIZE: SM-5XL



- Full head protection
- Waterproof half length zip
- Waterproof zip chest pocket
- Two hand warmer pockets
- Long tail flap for extra warmth, weather protection
- Draw string hood design with toggle adjustments

SHORT SLEEVE HOODIE

WS930 SIZE: SM-5XL



- Full head protection
- Waterproof half length zip
- Waterproof zip chest pocket
- Two hand warmer pockets
- Long tail flap for extra warmth, weather protection
- Draw string hood design with toggle adjustments

LONG SLEEVE CAMO HOODIE

WSC942 MEN-SIZE: SM-5XL
WSC942 WOMEN-SIZE: XS-3XL



- Full head protection
- Waterproof zip
- Velcro sleeve adjustments
- Draw string hood design with toggle adjustments
- Waterproof zip chest pocket
- Two hand warmer pockets
- Long tail flap for extra warmth, weather protection

HALF ZIP FULL SLEEVE CAMO HOODIE

WSC944
SIZE: SM-5XL



- Waterproof half length zip
- Velcro sleeve adjustments
- Draw string hood design with toggle adjustments
- Waterproof zip chest pocket
- Two hand warmer pockets
- Long tail flap for extra warmth, weather protection

SHORT SLEEVE CAMO HOODIE

WSC946
SIZE: SM-5XL



- Waterproof half length zip
- Full head protection
- Waterproof zip chest pocket
- Two hand warmer pockets
- Long tail flap for extra warmth, weather protection
- Draw string hood design with toggle adjustments



SHORT SLEEVE VEST

OS40 SIZE: SM-5XL



SLEEVELESS VEST

OS50 SIZE: SM-5XL



RIGGERS VEST

OS60 SIZE: SM-5XL



FLUORO DETACHABLE CAPE

OS140 SIZE: SM-5XL



OILSKIN

NATURE'S BEST

Our oilskin vests are made with waxed breathable cotton and lined with fleece, so you'll stay dry and warm when the weather's wet and cold. Special features across the range include leather shoulder patches, hand-warmer pockets and a cut-away front to reduce bulk. The detachable fluoro add-on is handy for working conditions that demand high-vis.





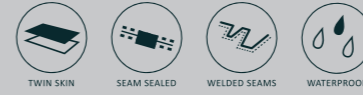
STORMFORCE BLUE

SEAWORTHY STYLE

Designed specifically for marine applications, our Stormforce Blue range features unique **TWIN-SKIN TECHNOLOGY** to keep the elements out - an outer layer of 100% waterproof ripstop fabric with sealed seams and an inner liner of breathable waterproof material with welded seams. Special features include our bright blue material, two-way zips, multiple pockets and seriously-engineered stormflaps.

PARKA

FJ610 SIZE: SM-5XL



Foldaway hood for extra versatility
High collar for improved comfort and protection
Reflector tape for extra visibility and safety
Heavy duty two-way zipper with full Velcro double stormflap
Comfortable and waterproof neoprene wrist cuffs



Unique stormproof hood design with drawstring adjustment for peripheral vision
1 internal pocket
1 external pocket
2 hand pockets
2 large storage pockets

BIB OVERTROUSERS

FJ611 SIZE: SM-5XL



Heavy duty elasticised braces with industrial side release buckles
Two lined hip pockets
Waterproof, windproof and breathable lining
Domed at the ankles for secure closure over boot



Large internal chest pocket with Velcro closure
Double welded crutch seam
Cut-away heel prevents trouser leg from getting caught under your boot

SHORT SLEEVE VEST

FJ602 SIZE: SM-5XL



Lined with sherpa fleece for added warmth and comfort
Reflector tape for extra visibility and safety
Heavy duty two way zipper with double stormflap



Unique stormproof hood design with drawstring adjustment for peripheral vision
High collar with foldaway hood
1 internal pocket
1 external pocket
2 hand pockets
Cut away to reduce bulk, extended tail flap for extra protection

WINTER JACKET

FJ603 SIZE: SM-5XL



Foldaway hood for extra versatility
Lined with technical micro-fleece
Reflector tape for extra visibility and safety
Heavy duty two-way zipper with full Velcro double stormflap
Comfortable and waterproof neoprene wrist cuffs



Unique stormproof hood design with drawstring adjustment for peripheral vision
High collar for improved comfort and protection
1 internal pocket
1 external pocket
2 hand pockets
2 large storage pockets
Cut away front to reduce bulk with long tail flap for extra warmth and weather protection

OVERTROUSERS

FJ612 SIZE: SM-5XL



Elastic and webbed waistband with nonslip step lock fastener
Waterproof, windproof and breathable lining
Domed at the ankles for secure closure over boot



Two lined and reinforced hip pockets
Reinforced crutch for maximum movement and strength
Cut-away heel prevents trouser leg from getting caught under your boot

SLEEVELESS VEST

FJ600 SIZE: SM-5XL



Lined with sherpa fleece for added warmth and comfort
Reflector tape for extra visibility and safety
Waterproof zip
Heavy duty zipper



High collar that fits under a helmet and protects face against the elements
External chest pocket
2 hand warmer pockets
Cut away to reduce bulk, extended tail flap for extra protection

AQUAFORCE



AQUAFORCE

WORK ON WATER

When your profession or obsession sees you out on the ocean, Aquaforce is the no-nonsense solution for staying dry and feeling comfortable while you get the job done. Aquaforce jackets and pants are constructed from super-tough, 100% waterproof, abrasion-resistant material that won't weigh you down. They're also easy to clean, even after the messiest day on the water.



PARKA

AQF501 SIZE: SM-5XL



Reflector tape for extra visibility and safety

Heavy duty two-way zipper with full Velcro double stormflap

Internal wrist cuffs



Unique stormproof hood design with drawstring adjustment for peripheral vision

External wrist adjustments

BIB OVERTROUSERS

AQF506 SIZE: SM-5XL



Large internal chest pocket

Leg cuff adjustment tabs

Internal leg stormcuff



Heavy duty elasticised braces with industrial side release buckles



TUFFLON



TUFFLON

EVEN TOUGHER THAN YOU

This is ultra-durable working gear for fishing industry professionals. Highly resistant to abrasion, fish oils and cleaning chemicals, Tufflon jackets and pants are 100% waterproof with an abrasive outer layer and a waterproof lining. You'll also find them light, flexible and comfortable to wear, so you can focus on the task at hand. Head-to-toe high-vis supports safety in all weather conditions.



PARKA

100THD SIZE: SM-5XL



BIB OVERTROUSERS

103THD SIZE: SM-5XL



MARINE

AQUASEAL



AQUASEAL

FISHERMAN'S FRIEND

If you fish for a living or for sport, a full kit of Aquaseal ensures the elements won't affect your performance. The fabric's 100% waterproof and highly durable; it's made to withstand corrosive fish fats and oils, as well as salt water spray. High-visibility panels ensure your crew mates will always know where you are, even when a big wave crashes over the bow.

NO SPLIT SEAM
LIFETIME GUARANTEE



PARKA

AS501 SIZE: SM-5XL



BIB OVERTROUSERS

AS506 SIZE: SM-5XL



SAFETY

STORMFORCE HI-VIZ

PREMIUM

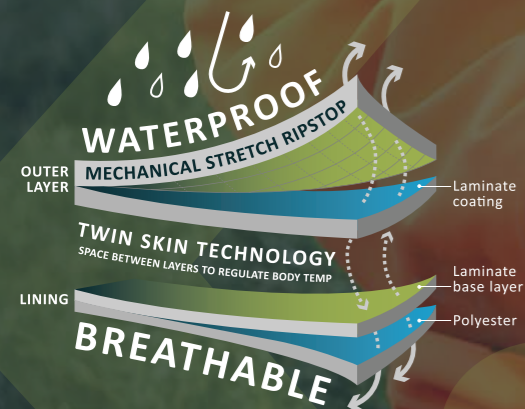


STORMFORCE HI-VIZ

SERIOUS ABOUT SAFETY

Fully compliant with current health and safety requirements for high visibility garments, Stormforce TTMC gear is made with an advanced **TWIN-SKIN** fabric that performs on all fronts – it's 100% waterproof and breathable. Whatever your day throws at you, you'll stay dry and comfortable. Large waterproof storage pockets are a feature with every garment. Stormforce TTMC gear is suitable for day and night use.

Garments comply with: TTMC-W17
Fabrics: AS/NZS 1906.4:2010- Day/Night use
Garment Design: AS/NZS 4602:1: 2011 + AMDT No.1: Nov 2016



PARKA STFC770 SIZE: SM-5XL



Reflective tape-
belt, brace, tail
and upper arm

Internal chest
zipped pocket

Heavy duty
two-way zipper
with double
stormflap over zip
with brass metal
dome fasteners



Unique full faced
stormproof hood
with drawstring and
toggle adjustment,
giving excellent
peripheral vision

Designed to
accommodate
protective hard hat

Twin-skin technology
with outer being a
rugged 3 layer ripstop

Two large
waterproof
storage pockets

Neoprene
wrist cuffs

BIB OVERTROUSERS STFC772 SIZE: SM-5XL



Heavy duty
webbing and
elasticised
braces with
industrial side
release buckles

Two lined
hip pockets

Reflective tape

Domed at
the ankles for
secure closure
over boot



Large internal
waterproof
chest pocket
with Velcro
closure

Unique double
welded crutch
seam

Cut-away heel
prevents trouser
leg from getting
caught under
your boot

OVERTROUSERS STFC771 SIZE: SM-5XL



Elastic and
webbed
waistband
with nonslip
step lock
fastener

Reflective tape

Domed at
the ankles for
secure closure
over boot



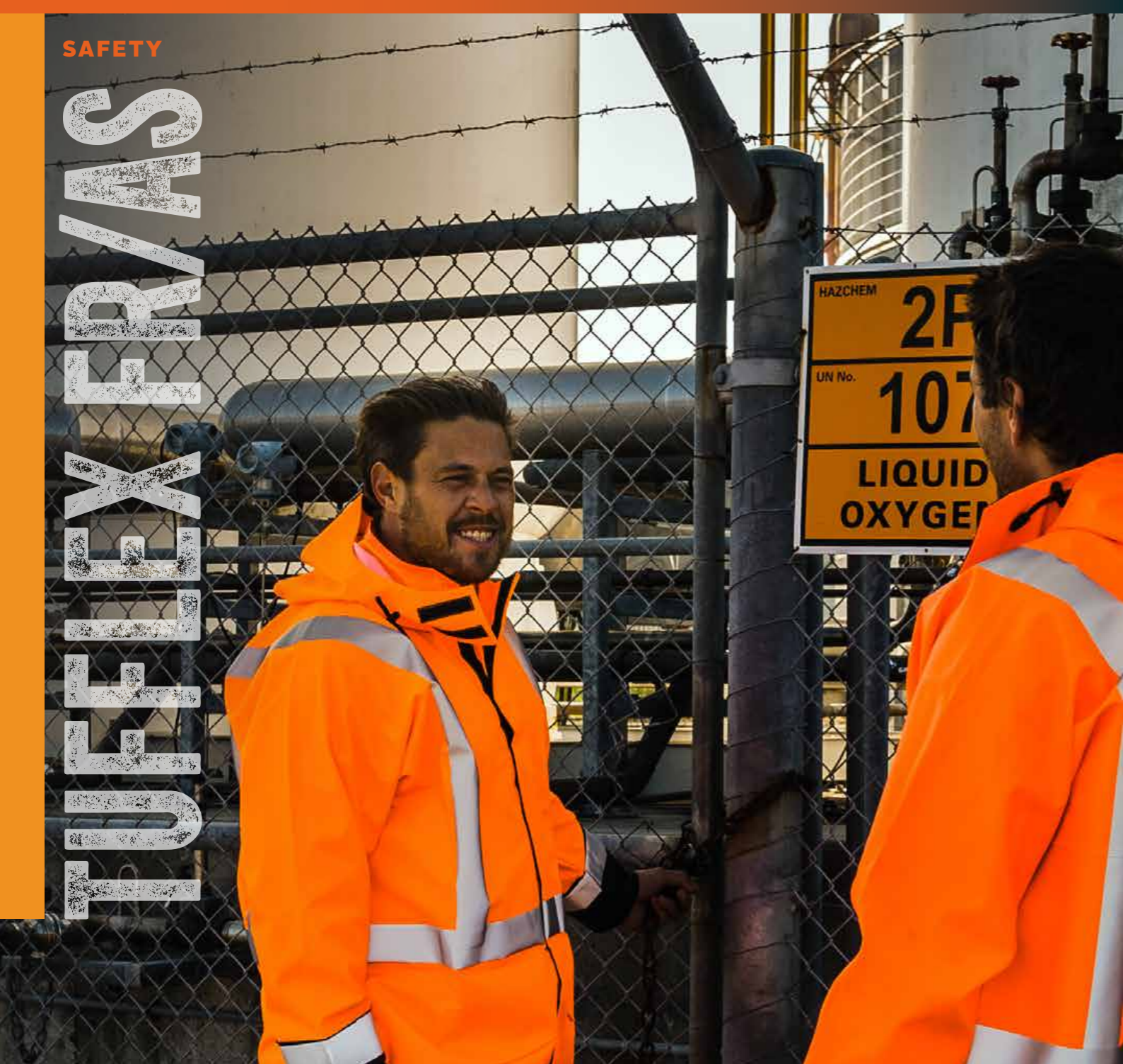
Two lined
hip pockets

Unique double
welded crutch
seam

Cut-away heel
prevents trouser
leg from getting
caught under
your boot



TUFFLEX FR/AS



TUFFLEX FR/AS

BE SAFE BE SEEN

Purpose-built for work environments that demand anti-static and flame-retardant protective clothing, Tufflex FR/AS is the workwear you don't have to think about. The advanced European fabric is not only 100% waterproof, it's also chemical resistant and flexible, allowing you to move comfortably through your day. High-frequency welded seams, large waterproof storage pockets and storm-proof cuffs are part of the package.

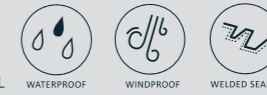
Garments comply with: TTMC-W17
 Fabrics: AS/NZS 1906.4:2010
 Garment Design: AS/NZS 4602:2011 + AMDT No.1: Nov 2016
 Antistatic- EN1149
 Flame Retardant- ENISO14116

**NO SPLIT SEAM
 LIFETIME GUARANTEE**



PARKA

TFH770FR/AS SIZE: SM-5XL



Reflective tape-
belt, brace,
tail and cuffs

Heavy duty
two-way zipper

Neoprene
wrist cuffs



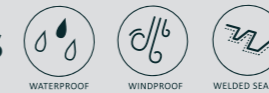
Unique
stormproof
hood with
drawstring and
toggle adjustment

No metal domes or
eyelets, compliant
with FR standards

Two large
storage pockets

BIB OVERTROUSERS

TFH772FR/AS SIZE: SM-5XL



Elasticised
adjustable
braces

Large internal
chest pocket

Two side
access
pockets

Reflective tape

Stormcuff at
base of leg



OVERTROUSERS

TFH771FR/AS SIZE: SM-5XL



Elasticated
waist band

Two side
access pockets

Reflective tape

Stormcuff at
base of leg



TUFFLEX HI-VIZ

TUFFLEX HI-VIZ

EYES ON YOU

Purpose-built for demanding work environments, Tufflex Hi-Viz meets TTMC-W17 standards for workwear on a hazardous site. It ticks all the boxes – 100% waterproof, tear-resistant, lightweight, flexible for comfort, and resistant to oil and chemicals. All seams are high-frequency welded, so they lie flat and absolutely won't let water in.

All garments are available in Orange and Yellow.

Garments comply with: TTMC-W17
 Fabrics: AS/NZS 1906.4:2010
 Garments Design: AS/NZS 4602:1: 2011 + AMDT No.1: Nov 2016

**NO SPLIT SEAM
 LIFETIME GUARANTEE**



PARKA

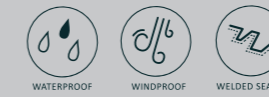
TFH770 SIZE: SM-5XL



- Stormflap with brass dome fasteners
- Reflector tape for extra visibility and safety
- Heavy duty two-way zipper
- Neoprene wrist cuffs
- Unique stormproof hood design with drawstring adjustment
- 2 large storage pockets

BIB OVERTROUSERS

TFH772 SIZE: SM-5XL



- Elasticised adjustable braces
- Stormcuff at base of leg
- One large internal chest pocket
- Two side access pockets
- Reflective tape

SHORT SLEEVE VEST

TFH774 SIZE: SM-5XL



- Lined with sherpa fleece for added warmth and comfort
- Reflector tape for extra visibility and safety
- Heavy duty zipper
- Short sleeves for added weather protection
- 1 chest pocket
2 hand pockets
- Cut away front to reduce bulk

WINTER JACKET

TFH775 SIZE: SM-5XL



- Lined with micro-fleece
- Stormflap with brass dome fasteners
- Reflector tape for extra visibility and safety
- Heavy duty two-way zipper
- Neoprene wrist cuffs
- Unique stormproof hood design with drawstring adjustment
- 1 internal chest pocket
1 external chest pocket
- 2 large hand pockets

OVERTROUSERS

TFH771 SIZE: SM-5XL



- Elasticated waist band
- Stormcuff at base of leg
- Two side access pockets
- Reflective tape

SLEEVELESS VEST

TFH776 SIZE: SM-5XL



- Lined with sherpa fleece for added warmth and comfort
- Reflector tape for extra visibility and safety
- Heavy duty zipper
- 1 chest pocket
2 hand pockets
- Cut away front to reduce bulk

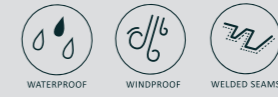


WINDTEC PVC

GETS THE JOB DONE

Our Windtec range provides affordable wet gear for budget-conscious people who need to stay dry. It's 100% waterproof and, unlike some low-cost brands, it's also durable and flexible. What's more, we've included design features that you won't be expecting with a price-fighter range, such as internal wrist cuffs, stormflaps and generous pockets. There's a lot to like about Windtec.

PARKA WT550 SIZE: SM-5XL



BIB OVERTROUSERS WT551 SIZE: SM-5XL



OVERTROUSERS WT551 SIZE: SM-5XL





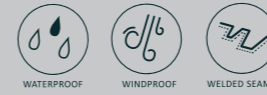
FOOD GRADE & APRONS

SELLS LIKE HOT CAKES

Our Food Grade range of protective clothing is designed specifically for the food processing industry. The 100% waterproof material is super-tough and flexible, so it won't de-laminate or crack – even after hundreds of wash downs. It's also resistant to hot splashes and corrosive substances.

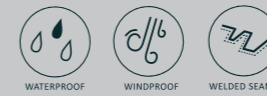
PARKA

FG380 SIZE: SM-5XL



OVERTROUSERS

FG381 SIZE: SM-5XL



BIB OVERTROUSERS

FG382 SIZE: SM-5XL



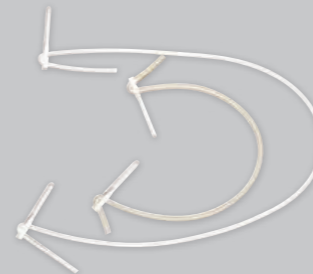
APRONS

UN352 SIZE: SM-5XL



HOOK AND CORD SET

FG389



MARK 2 APRON HOOKS

FG393B



PVC APRON TIES - 12MM

FG392



PVC APRON TAPES 12MM

FG395A



SIZE CHART

Mens									
SIZES	XS	SM	M	L	XL	2XL	3XL	4XL	
OVERALLS	4	5	6	7	8	9	10	11	
CHEST									
CM		95	100	105	110	115	120	125	
INCH		37 ½	39 ½	41 ½	43 ½	45 ½	47 ½	49 ½	
WAIST									
CM		82	87	92	97	102	107	112	
INCH		32	34	36	38	40	42	44	

Womens								
SIZES	XS(8)	SM(10)	M(12)	L(14)	XL(16)	2XL(18)	3XL(20)	
CHEST								
CM	83	88	93	98	103	108	113	
INCH	32 ½	34 ½	36 ½	38 ½	40 ½	42 ½	44 ½	
WAIST								
CM	64	69	74	79	84	89	94	
INCH	25	27	29	31	33	35	37	

Kids							
SIZES	2	4	6	8	10	12	
CHEST							
CM	53	58	63	68	73	78	
INCH	21	23	25	27	29	31	
WAIST							
CM	48	51	54	57	60	63	
INCH	19	20	21	22	24	25	

Gumboots (These are mens sizing)		
UK	MM	EURO
5	243	39
6	244-254	40
7	256-262	41
8	263-271	42
9	272-279	43
10	280-287	44
11	288-296	45
12	297-304	46
13	304-313	47

All measurements are body measurements not garment.

Smaller and larger sizes are available. Please contact us for more information.



CHEST/BUST

WAIST

HIP AT WIDEST POINT

CHEST/BUST

WAIST

HIP AT WIDEST POINT

WATERPROOF GLOSSARY



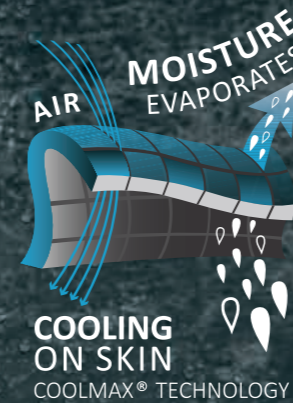
TWIN-SKIN TECHNOLOGY

Kaiwaka is the original creator of **TWIN-SKIN TECHNOLOGY**, which gives you an extra layer of protection against whatever the elements throw at you. The outer is made of a tough and durable ripstop which is laminated to a 100% waterproof and windproof backing. This is layered with a second 100% waterproof and windproof liner which is soft and breathable – thereby giving you twice the protection. To ensure the garment is 100% waterproof all seams are welded or seam sealed.



WEATHERSHIELD

Weathershield is made with an advanced triple-layer fleece, which has an external layer of advanced microfleece, a PU windproof mid-layer and a cosy microfleece internal layer. All Weathershield garments are windproof, water-resistant and breathable to ensure maximum comfort.



OVERALLS

This fabric is the ultimate material for superior overalls using Lycra® and Coolmax® technology. You get the natural breathability of cotton, the hard-wearing durability of polyester and the two-way stretch properties of Lycra®.



WATERPROOF



SEAM SEALED



BREATHABLE



INSULATING



TWIN SKIN



WINDPROOF



WELDED SEAMS



TOUGH



WEATHER RESISTANT



P: +64 9 431 2187 E: sales@kaiwakaclouding.co.nz

Freephone NZ 0800 524 9252 / **Freephone** Australia 1800 338 374

PO Box 46, 1969 Main Road, Kaiwaka, Northland 0542, New Zealand



Follow us on Facebook and Instagram

Enquire or buy online at kaiwakaclouding.co.nz